

#17986

Three Bedroom Semi-Detached House in Dali

 Dali, Nicosia

€275,000 +VAT





Overview

Specifications

Bedrooms



3

Bathrooms



2

Covered

147 m²

Type **Semi-Detached House**

Toilets **3**

Plot **292 m²**

Status **Off plan**

Year of construction **2026**

Energy efficiency rating **A**

Description

Two-storey semi-detached house in Dali, located in Panagia Evangelistria Quarter close to Dali's Amphitheater.

This modern house will consist of an open-plan kitchen/ living room/ dining area and a guest toilet on the ground floor. On the first floor, there will be three bedrooms - the main with en-suite facilities & a small balcony as well as a family bathroom.

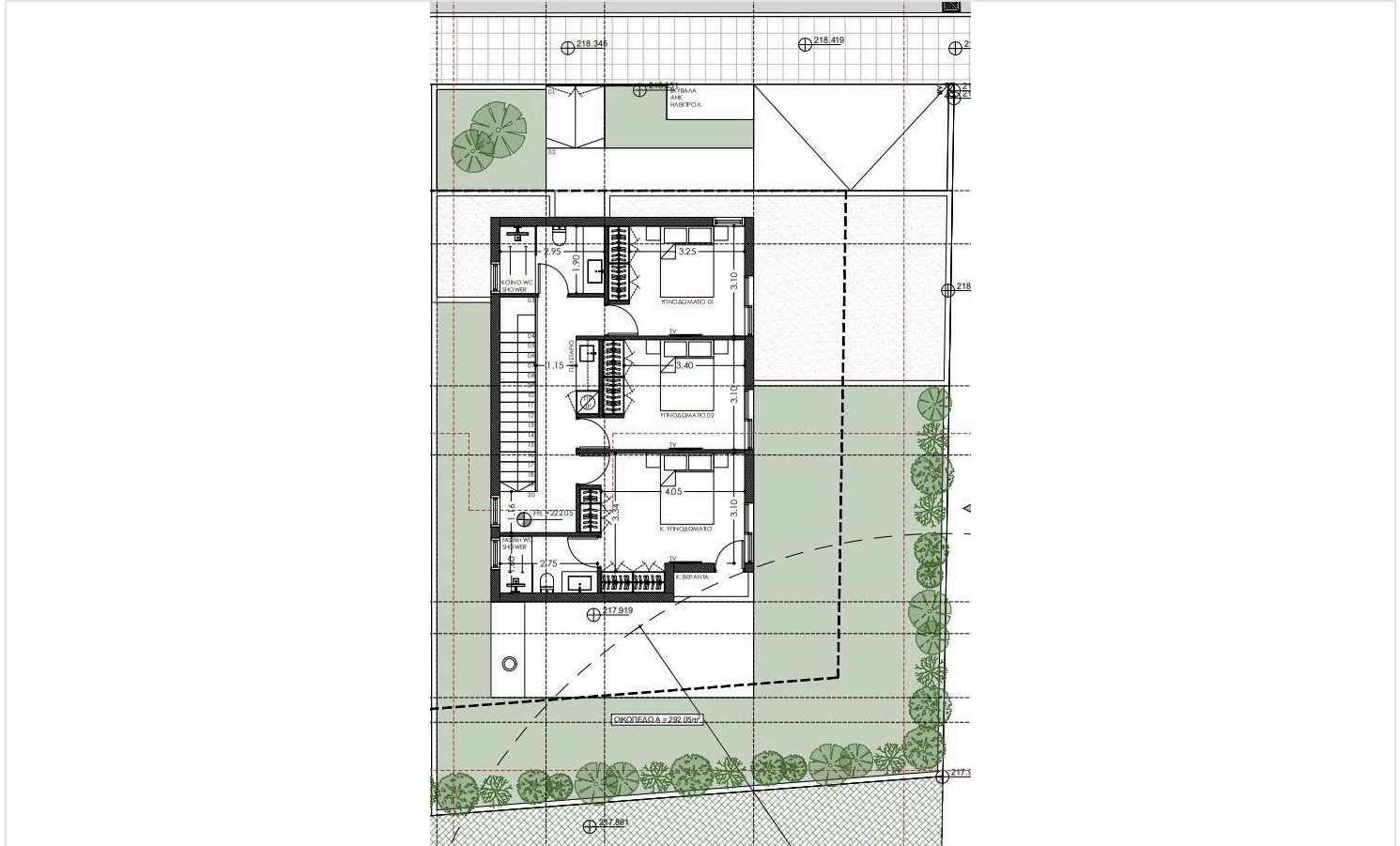
Externally, the property will feature a beautiful garden, covered & uncovered verandas and two covered parking spaces.

*Full installation of photovoltaic panels is included in the price.

Estimated Completion: October 2026



This architectural floor plan shows a building with several rooms and outdoor spaces. The plan includes a staircase, a kitchen, a dining area, a living area, a reception area, a parking area, and a garden. The building is situated on a plot with a grid system (A-H, 1-10) and is surrounded by a road and a parking area. The plan also shows the building's footprint, walls, and doors. The rooms are labeled with their names in Russian: "КОМНАТА" (Room), "КУХНЯ" (Kitchen), "ЖИЛЫЙ КОМНАТА" (Living Room), "ПРИЕМНАЯ" (Reception), "ПАРКИНГ" (Parking), and "САД" (Garden). The plan also shows the building's footprint, walls, and doors. The rooms are labeled with their names in Russian: "КОМНАТА" (Room), "КУХНЯ" (Kitchen), "ЖИЛЫЙ КОМНАТА" (Living Room), "ПРИЕМНАЯ" (Reception), "ПАРКИНГ" (Parking), and "САД" (Garden).



Additional information

Facilities

Aircondition, Provision

Heating, Provision

Parking, Covered

Solar photovoltaic panels

Solar water heater

Features

Alarm system (provision)

Balcony

CCTV (provision)

Double glazing

Easy access to highway

Easy access to main roads

En suite bathroom

Garden

Guest WC

Luxury specifications

Modern design

Near amenities

Open plan

Pipe-in-pipe plumbing system

Pressurized water system

Quiet area

Shutters, electric (provision)

Thermal insulation

Veranda

Veranda, large

Contact us



Olga Michaelidou

📞 (+357) 22525269

✉️ olgamichaelidou1999@gmail.com

