

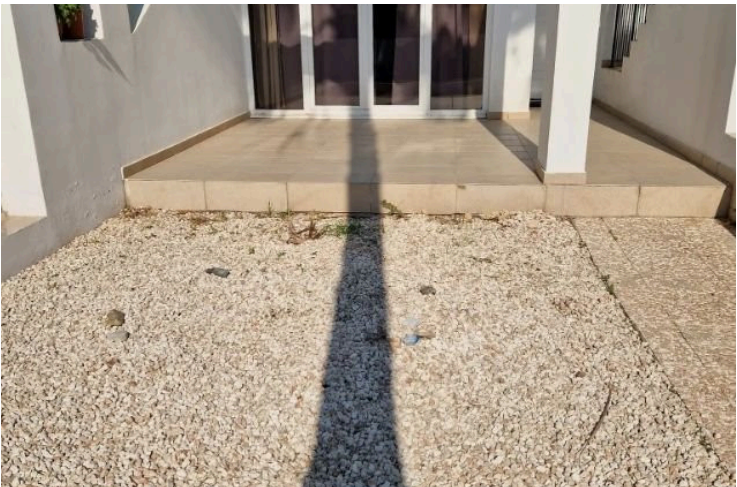
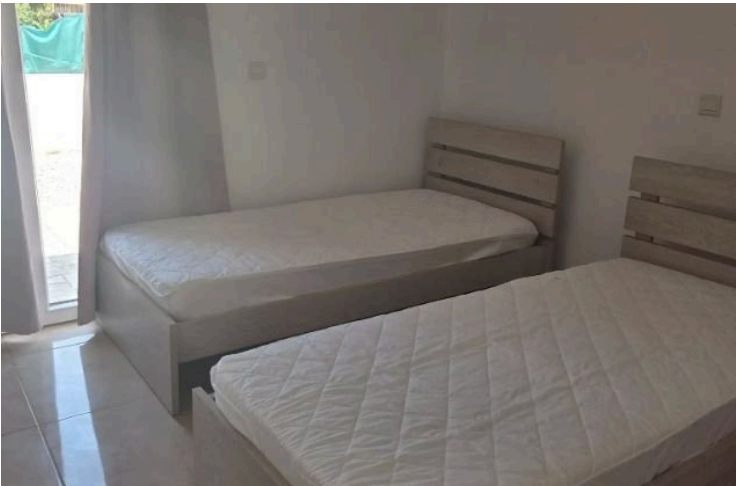
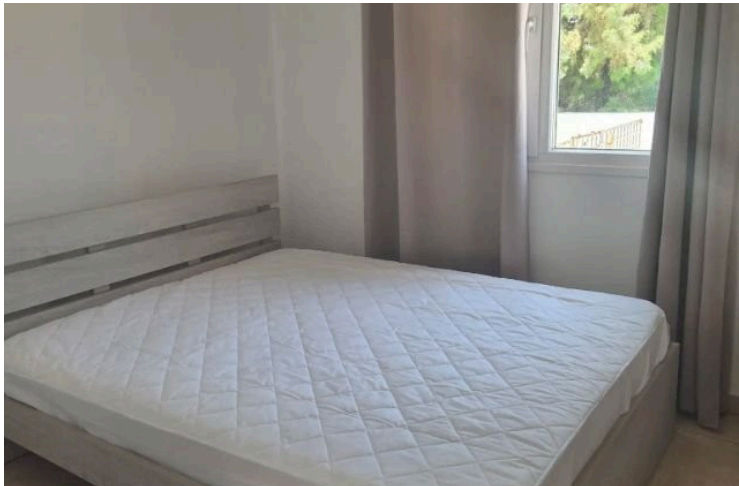
#18412

# Two Bedroom Ground Floor Apartment in Pyla

📍 Pyla Tourist Area, Larnaca

**€850** /month





# Overview

## Specifications

Bedrooms

 2

Bathrooms

 1

Covered

 65 m<sup>2</sup>

Type	Apartment	Furnished	Fully furnished
Toilets	1	Energy efficiency rating	 Certificate expected
Year of construction	2009		

## Description

Two bedroom ground floor apartment in Pyla, located at a walking distance from the nearest beach.

The apartment was recently renovated and it consists of an open-plan living room/ dining area, a semi-separate kitchen, two bedrooms and a family bathroom.

Externally, there is a garden, large partially covered verandas and an uncovered parking space.



# Additional information

## Facilities

Aircondition, Split system

Heating, Split system

Parking, Uncovered

Solar water heater

## Features

Easy access to highway

Easy access to main roads

Garden, large

Kitchen appliances

Near amenities

Near bus route

Open plan

Quiet area

Spacious rooms

Veranda

Veranda, large

Walking distance to beach

## Contact us



**Gregory Megerditchian**

☎ (+357) 99623386

✉ gregory@cytanet.com.cy

