

#20813

Luxury Semi-Detached House in Emba

📍 Empa, Paphos

€510,000 +VAT





Overview

Specifications

Bedrooms

 3

Bathrooms

 2

Covered

 191 m²

Type **Semi-Detached House**

Toilets **3**

Plot **380 m²**

Uncovered veranda **15 m²**

Year of construction **2026**

Energy efficiency rating  **A**

Description

Luxury semi-detached house in Emba, located 3km away from the nearest beach.

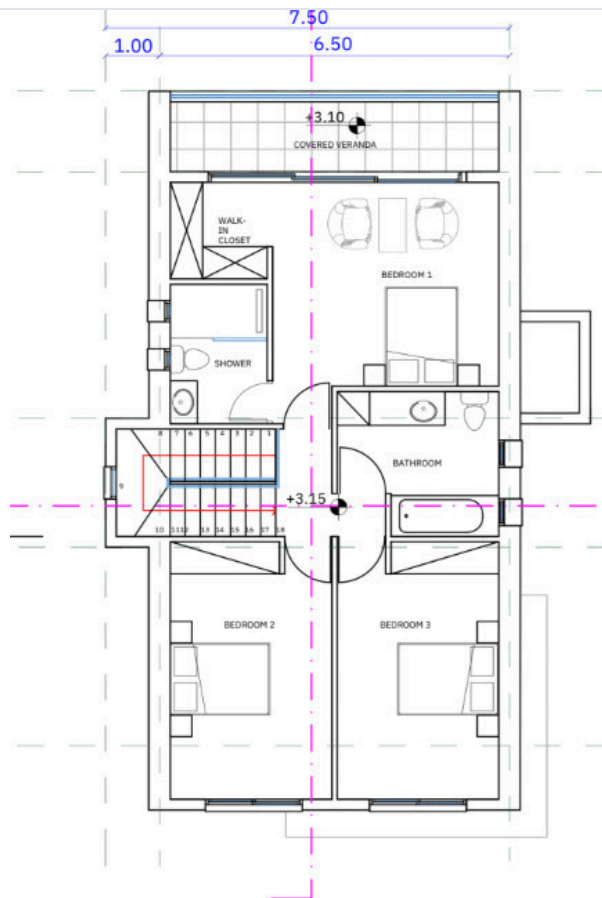
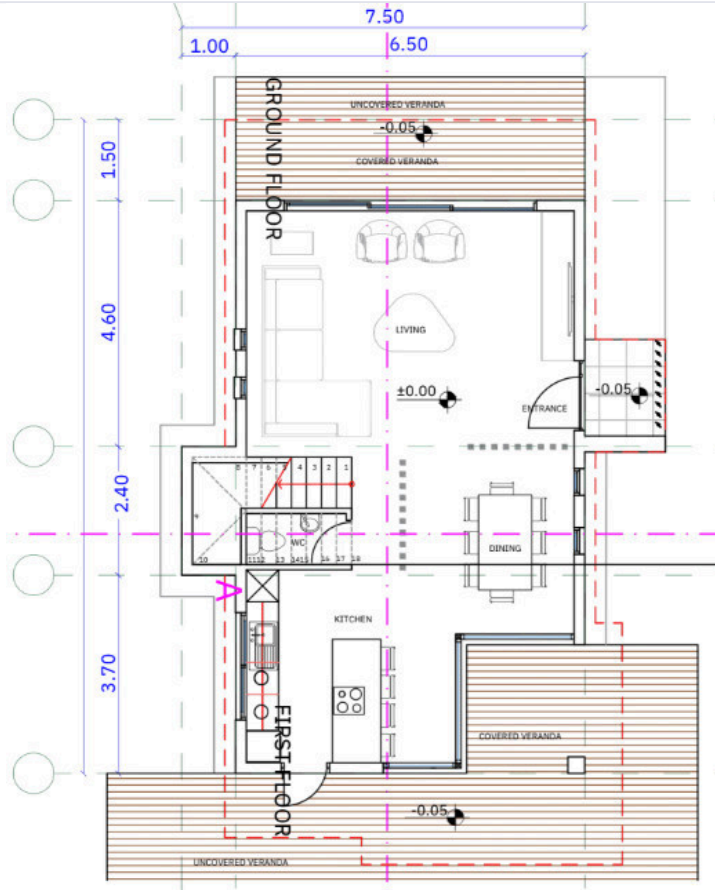
The house will consist of an open-plan kitchen/ living room/ dining area and a guest toilet on the ground floor. On the first floor, there will be three bedrooms - the main with en-suite facilities & a walk-in closet, a family bathroom, an office space and covered veranda.

Externally, there will be a large garden, covered & uncovered verandas and two covered parking spaces.

Estimated Completion: 9 months from contract signing



Floor plans



Additional information

Facilities

Aircondition, Provision

Heating, Provision

Parking, Covered

Pool, Optional

Features

Balcony, front

Barbeque

Bright

Easy access to main roads

En suite bathroom

Guest WC

Kitchen island

Luxury specifications

Modern design

Mountain view

Near amenities

Open plan

Quiet area

Sea view

Spacious rooms

Thermal insulation

Veranda, large

Contact us



Yuliia Borodina

 (+357) 94315260

 yuliia@synergyestates.cy

