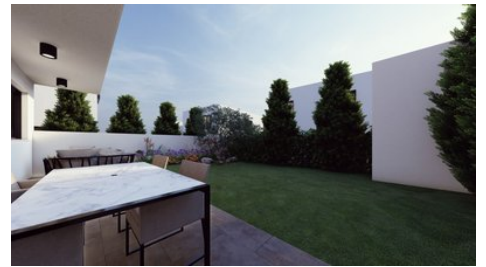




## Semi-Detached House in Kallithea, Dali

📍 Nicosia, Dali

#2093



<b>Price</b>	€277,000 +VAT	<b>Type</b>	House
<b>Bedrooms</b>	3	<b>Bathrooms</b>	2
<b>Covered</b>	163 m <sup>2</sup>	<b>Covered veranda</b>	5 m <sup>2</sup>
<b>Uncovered veranda</b>	23 m <sup>2</sup>	<b>Covered parking</b>	25 m <sup>2</sup>
<b>Plot</b>	234 m <sup>2</sup>	<b>Year of Construction</b>	2025
<b>Status</b>	Off plan	<b>Energy efficiency rating</b>	A
<b>Area</b>	Nicosia, Dali		

---

## Description

Modern two-storey semi-detached house located in Kallithea, Dali, close to Glasberg Area.

The house will consist of an open-plan living room/ dining area, a kitchen with a sitting area and a guest toilet on the ground floor. The first floor will consist of three bedrooms, the master en-suite, two more bedrooms that share a common bathroom.

In addition, there will be a large backyard, covered verandas and two parking spaces.

Estimated Date of Completion: February 2025

## Myranda Nassif

Administrator

✉ info@synergyestates.cy

☎ (+357) 22525269



## Facilities

Aircondition, Provision

Parking, Covered

Solar photovoltaic panels

Heating, Provision

Storage

---

## Features

Easy access to main roads

Garden

Open plan

Double glazing

Veranda

CCTV, Provision

Modern design

Easy access to highway

Pressurized water system

Alarm system, Provision

Guest WC

Quiet Area

En suite Bathroom

Near amenities

## Floor plans

