

#21684

Modern Semi-Detached House in Ypsonas, Limassol

📍 Ypsonas, Limassol

€415,000 +VAT





Overview

Specifications

Bedrooms

 3

Bathrooms

 1

Covered

 134 m²

Type **Semi-Detached House**

Toilets **2**

Plot **240 m²**

Covered veranda **23 m²**

Uncovered veranda **17 m²**

Garden **116 m²**

Covered parking **17 m²**

Status **Off plan**

Year of construction **2027**

Energy efficiency rating  **A**

Description

Two-storey Semi-Detached house in Ypsonas area with an easy access to the highway.

The house will consist of a large open-plan living room/ dining area/ kitchen, and a guest toilet on the ground floor. On the first floor there will be three bedrooms - the main with a large walk-in closet & ensuite facilities, a main bathroom and verandas.

Externally, there will be two parking spaces, large covered/ uncovered verandas and a large garden.

In addition, smart home automation allows residents full control over:

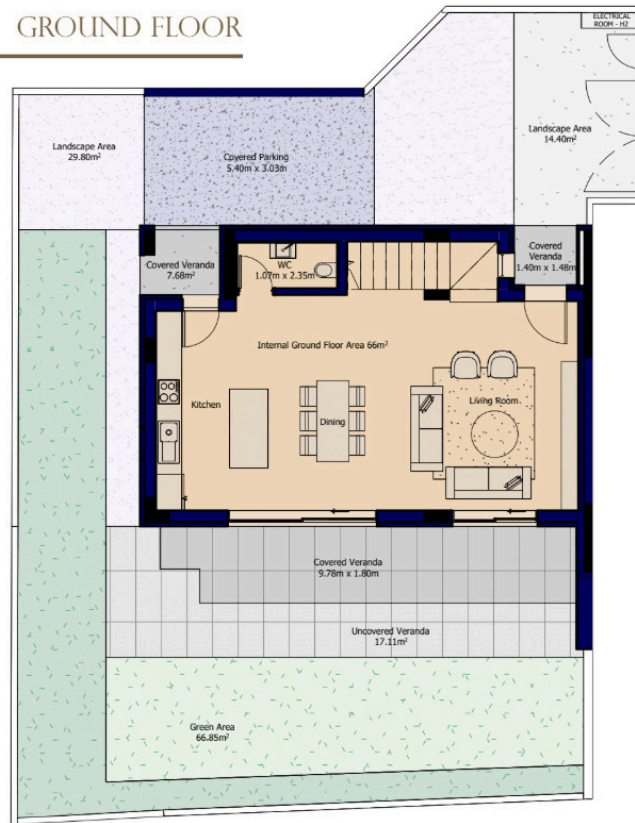
- Lighting and ambiance
- Heating and cooling systems
- Security features
- Real-time energy management

Estimated Completion: May 2027



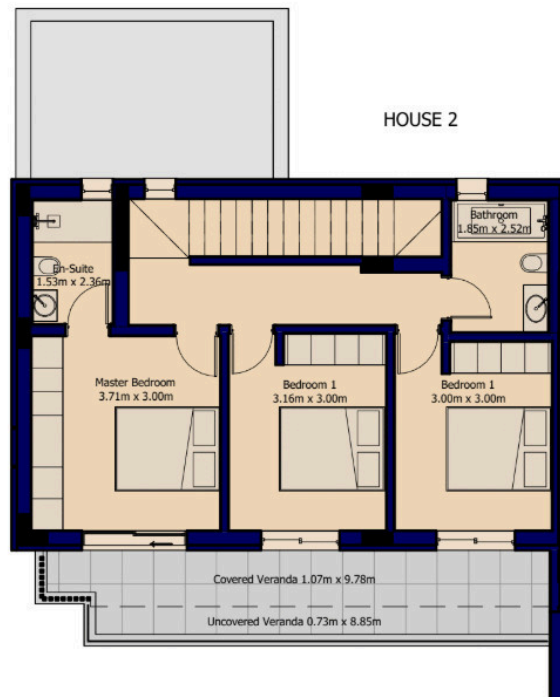
Floor plans

GROUND FLOOR



FIRST FLOOR

HOUSE 2



Additional information

Facilities

Aircondition, Split system

Parking, Covered

Gated complex

Solar photovoltaic panels

Heating, Split system

Solar water heater

Features

Alarm system

Ceiling fans

Country view

Easy access to main roads

Fire detector

Garden

Kitchen appliances

Marble flooring

Municipal water/sewage

Next to green area

Pipe-in-pipe plumbing system

Safety deposit box

Veranda

Village view

Barbeque

City view

Double glazing

Energy efficient doors/windows

Fireproof entrance doors

Guest WC

Laminate flooring

Modern design

Near amenities

Open plan

Pressurized water system

Semi-solid parquet flooring

Veranda, back

Walk-in closet

CCTV

Combined kitchen and dining area

Easy access to highway

Entrance gate

Floor-to-ceiling windows

High ceilings

Luxury specifications

Mountain view

Near bus route

Panoramic view

Rental potential

Smart home automation

Veranda, front

Wooden flooring

Contact us



Yuliia Borodina

☎ (+357) 94315260

✉ yuliia@synergyestates.cy

