

#23354

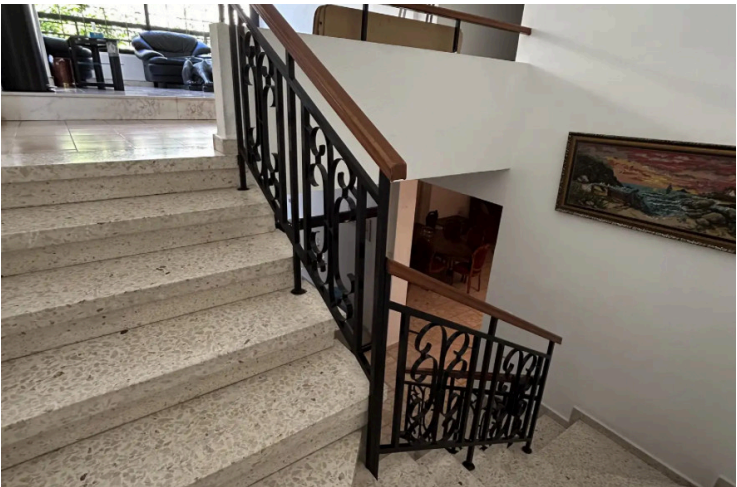
# Semi-Detached House in Mesa Getonia

📍 Mesa Geitonia, Limassol

€2,300 /month







# Overview

## Specifications

Bedrooms



6

Bathrooms



3

Covered

340 m<sup>2</sup>

Type

**Semi-Detached House**

Toilets

**4**

Status

**Key ready**

Furnished

**Partially furnished**

Energy efficiency rating



## Description

Semi-detached house located in the Mesa Getonia area, next to the Sigma bakery, park, cafes, and schools, with easy access to all amenities.

The house consists of an open-plan kitchen (plus two small kitchenettes), spacious living room/ dining area, two bedrooms, a family bathroom, a guest toilet and a covered veranda on the ground floor. Four bedrooms (main with en-suite facilities), a family bathroom, and a covered veranda on the first floor.

Moreover, there is a storage room and two parking spaces on the ground floor.

### FEATURES:

- Great Location
- Garden
- Fireplace
- Partially furnished
- Large living room with built-in bar area
- Newly installed air conditioning in all spaces



# Additional information

## Facilities

Aircondition, Split system

Parking, Uncovered

Heating, Split system

Solar water heater

Landscaped garden

Storage

## Features

Balcony

Combined kitchen and dining area

En suite bathroom

Guest WC

Laminate flooring

Near amenities

Panoramic view

Quiet area

Veranda, large

Bright

Easy access to highway

Fitted wardrobes

Kitchen appliances

Mountain view

Near bus route

Pipe-in-pipe plumbing system

Spacious rooms

City view

Easy access to main roads

Ground floor bedroom

Kitchenette

Municipal water/sewage

Next to green area

Pressurized water system

Veranda

## Contact us



**Inna Burak**

📞 (+357) 97478813

✉️ burakinna.bis@gmail.com

