

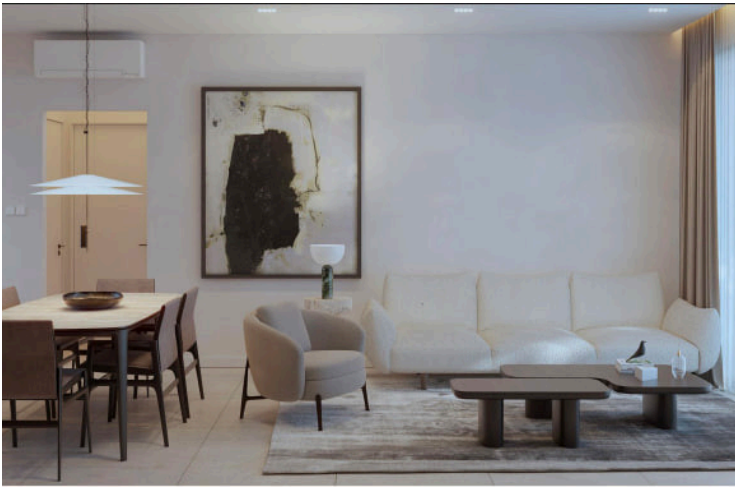
#26028

# Two Bedroom Penthouse in Germasogeia, Limassol

📍 Germasogeia, Limassol

€500,000 +VAT





# Overview

## Specifications

Bedrooms

 2


Bathrooms

 1

Covered

 76 m<sup>2</sup>

Type	<b>Apartment</b>
Toilets	<b>3</b>
Covered veranda	<b>17 m<sup>2</sup></b>
Roof garden	<b>76 m<sup>2</sup></b>

Status	<b>Under construction</b>
Year of construction	<b>2027</b>
Energy efficiency rating	 <b>A+</b>

## Description

Two bedroom penthouse in Germasogeia, Limassol, located in a quiet and convenient area close to all amenities.

This modern design penthouse will consist of an open-plan living room/ dining area/ kitchen, two spacious bedrooms, a family bathroom and a guest toilet, as well as covered and uncovered verandas.

Additionally, the property will benefit from a private roof garden, which will include a kitchen area and an additional bathroom.

On the ground floor there will be a covered parking space and a storage room for each apartment. The complex will also feature a common BBQ and lounge area.

Estimate completion - December 2027



# Floor plans



# Additional information

## Facilities

Aircondition, Provision

Parking, Covered

Storage

Elevator

Solar photovoltaic panels

Heating, Provision

Solar water heater

## Features

Combined kitchen and dining area

Easy access to highway

Energy efficient doors/windows

Floor-to-ceiling windows

Modern design

Near bus route

Quiet area

Thermal insulation

Walking distance to beach

Country view

Easy access to main roads

Entrance gate, automated

Heart of city center

Municipal water/sewage

Pipe-in-pipe plumbing system

Rental potential

Veranda, front

Double glazing

Electric car charger

Entrance hall

Investment opportunity

Near amenities

Pressurized water system


Sound insulation

Walk-in closet

## Contact us



**Yuliia Borodina**

 (+357) 94315260

 [yuliia@synergyestates.cy](mailto:yuliia@synergyestates.cy)

