

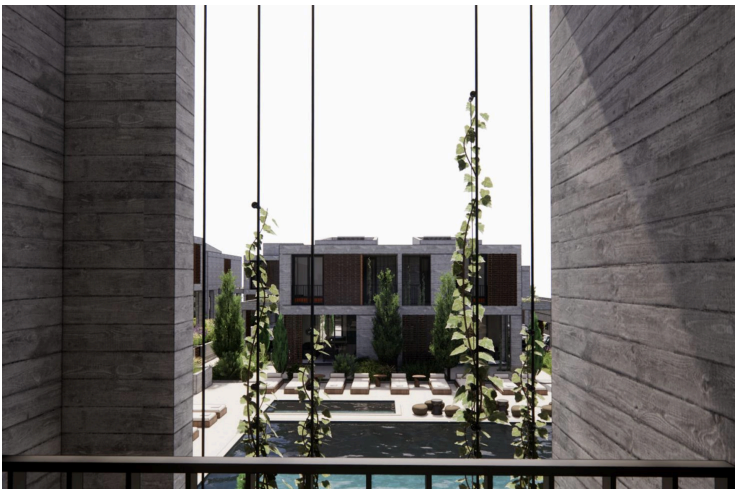
#26156

# Studio Apartment in Emba

📍 Empa, Paphos

€205,000 +VAT





# Overview

## Specifications

Bedrooms

 **Studio**

Bathrooms

 **1**

Covered

 **41 m<sup>2</sup>**

Type **Apartment**

Toilets **1**

Covered veranda **12 m<sup>2</sup>**

Status **Under construction**

Year of construction **2027**

Energy efficiency rating  **A**

## Description

Studio apartment located along a central road in the Emba area, yet set slightly back from the traffic, the project combines city convenience with a peaceful setting. A few steps to the upcoming Metropolitan Private Hospital.

The studio will consist of an open-plan kitchen / living / sleeping area and a bathroom.

Additionally, on the ground floor, there will be a covered parking space and a storage room for each apartment.

### FEATURES:

- Modern Design
- Communal Swimming Pool
- Gated Community
- Gym
- Spa
- Landscaped Gardens
- Private Parking
- Underfloor Heating (optional)
- High-quality finishes
- Energy Efficiency Class A
- Investment opportunity

### Optional:

- Fully Loaded Package: €22,000

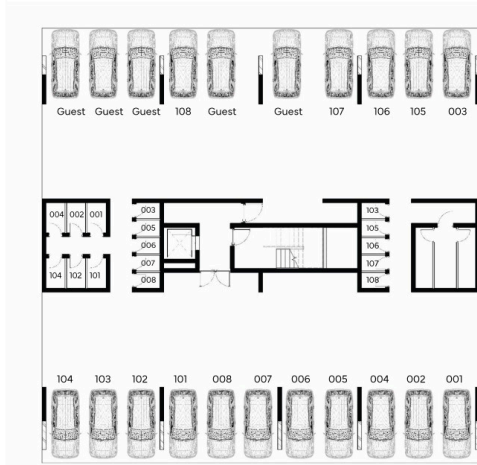


# Floor plans

MASTERPLAN



Block B



# Additional information

## Facilities

Aircondition, Split system

Heating, Split system

Pool, Communal

Storage

Gated complex

Landscaped garden

Solar water heater

Gym

Parking, Covered

Spa

## Features

Attic

Combined kitchen and dining area

Easy access to main roads

Fitted wardrobes

Investment opportunity

Municipal water/sewage

Next to green area

Pool view

Rental potential

Ventilation system

Balcony

Double glazing

En suite bathroom

Garden

Modern design

Near amenities

Panoramic view

Pressurized water system

Sea view

Veranda

Bright

Easy access to highway

Entrance hall

High ceilings

Mountain view

Near bus route

Pipe-in-pipe plumbing system

Quiet area

Spacious rooms

## Contact us



**Inna Burak**

📞 (+357) 97478813

✉ burakinna.bis@gmail.com

