

#27141

Semi-Detached House in Paphos

📍 Pegeia, Paphos

€425,000 +VAT





Overview

Specifications

Bedrooms

 3

Bathrooms

 2

Covered

 112 m²

Type **Semi-Detached House**

Toilets **3**

Plot **126 m²**

Covered veranda **6 m²**

Status **Under construction**

Energy efficiency rating  **A**

Description

Semi-detached house located in the Pegeia area of Paphos. With easy access to local amenities, main roads, Akamas national park, sea caves, schools, universities, hospitals, post office, zoo, and restaurants, while providing a peaceful and exclusive living environment.

The house will consist of a large kitchen with a dining area/living room, three bedrooms (master en-suite), and a family bathroom.

Externally, there will be a covered veranda and a parking area.

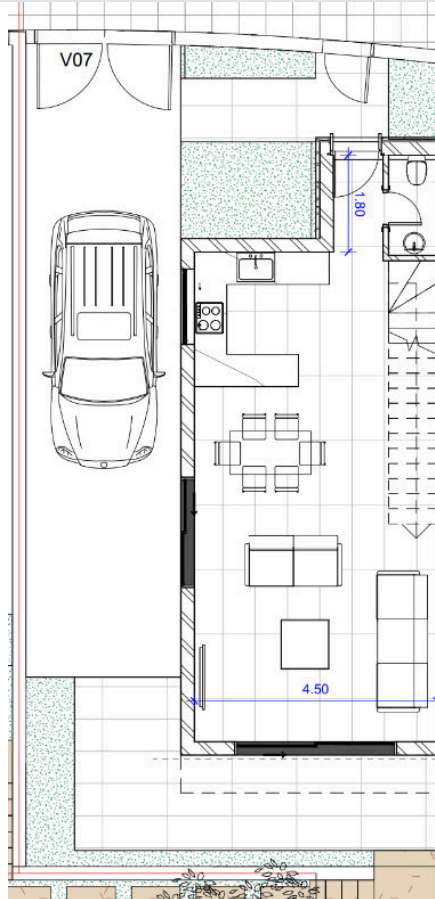
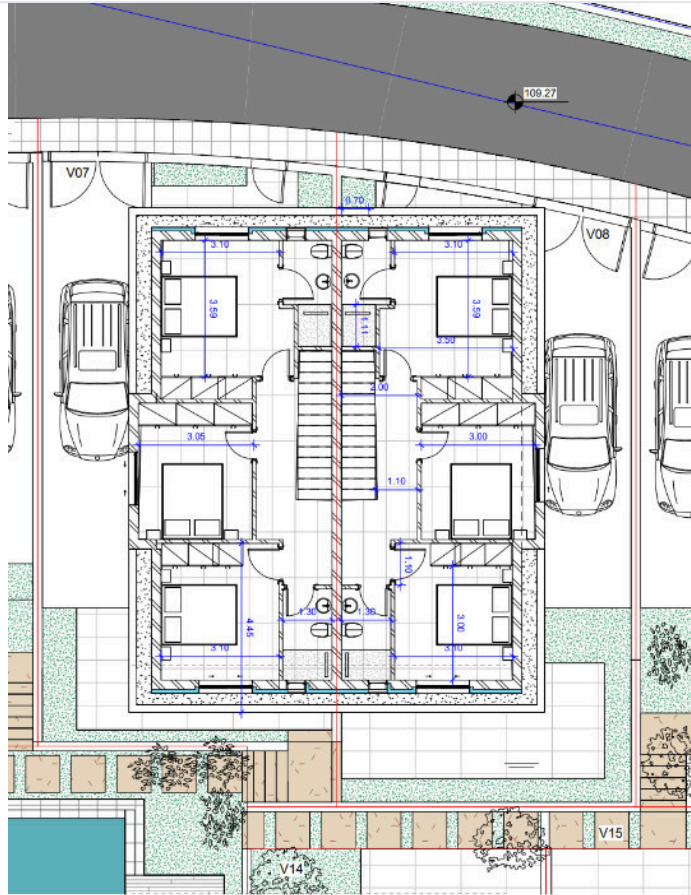
FEATURES :

- Communal swimming pool
- Landscaped gardens and open spaces
- Private internal road with visitor parking
- Contemporary Mediterranean design
- Energy-efficient construction
- Bright interiors with modern finishes

Estimated completion: Q2 2027



Floor plans



Additional information

Facilities

Aircondition, Split system

Heating, Split system

Pool, Communal

Clubhouse

Landscaped garden

Gated complex

Parking, Covered

Features

Bright

Double glazing

En suite bathroom

Fitted wardrobes

Guest WC

Mountain view

Near bus route

Pipe-in-pipe plumbing system

Sound insulation

Veranda

Combined kitchen and dining area

Easy access to highway

En suite shower

Floor-to-ceiling windows

High ceilings

Municipal water/sewage

Own water supply

Pressurized water system

Spacious rooms

Water softener

Courtyard

Easy access to main roads

Entrance gate

Garden

Modern design

Near amenities

Panoramic view


Solitary

Thermal insulation

Contact us



Yehor Chrysostomou

 (+357) 22525269

 yehorborodin@gmail.com

