

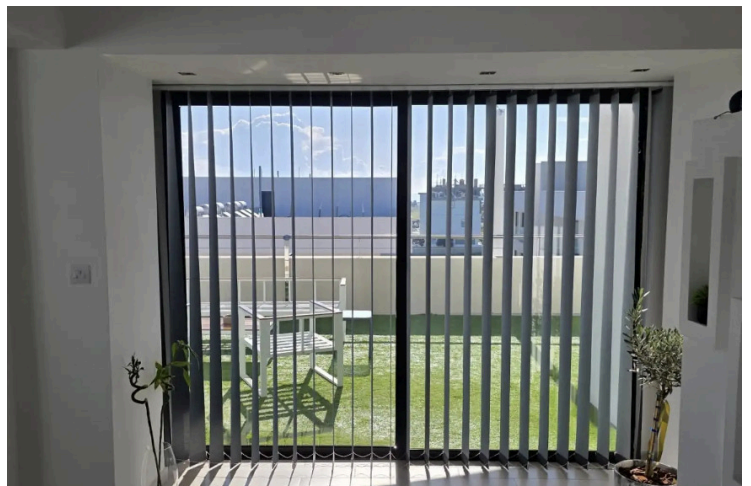
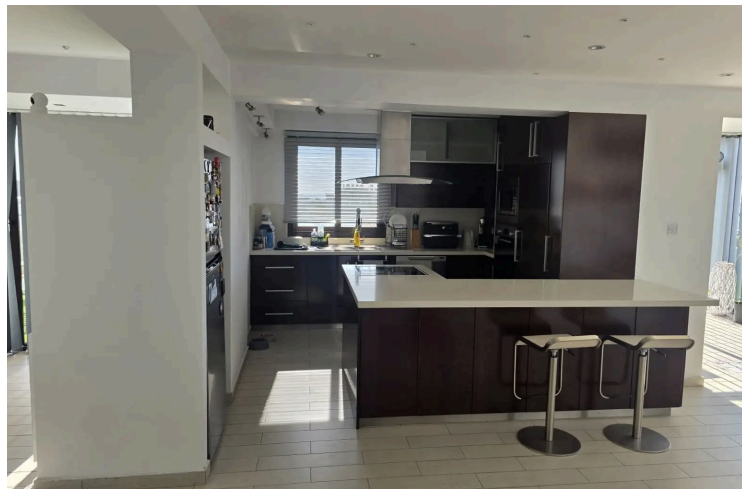
#28406

Two Bedroom Penthouse in Livadia, Larnaca

📍 Livadia Larnakas, Larnaca

€300,000





Overview

Specifications

Bedrooms

 2

Bathrooms

 2

Covered

 108 m²

Type **Apartment**

Toilets **2**

Uncovered veranda **100 m²**

Year of construction **2010**

Furnished **Unfurnished**

Description

Two-bedroom penthouse in Livadia, Larnaca, located close to Livadia Regional Gymnasium.

The apartment consists of an open-plan kitchen/dining area, a separate living room, two bedrooms (master with en-suite facilities), a family bathroom and a large veranda.

FEATURES:

- Appliances only
- A/C in all rooms
- Elevated
- Title deed
- Covered parking
- Fireplace
- Storage room



Additional information

Facilities

Aircondition, Split system

Storage

Heating, Split system

Parking, Covered

Features

Bright

Easy access to highway

En suite shower

Kitchen appliances

Mountain view

Near bus route

Panoramic view

Quiet area

Walk-in closet

City view

Easy access to main roads

High ceilings

Luxury specifications

Municipal water/sewage

Next to green area

Pipe-in-pipe plumbing system

Sea view

Combined kitchen and dining area

En suite bathroom

Indoor fireplace

Modern design

Near amenities

Own water supply


Pressurized water system

Veranda, large

Contact us



Yehor Chrysostomou

 (+357) 22525269

 yehorborodin@gmail.com

