

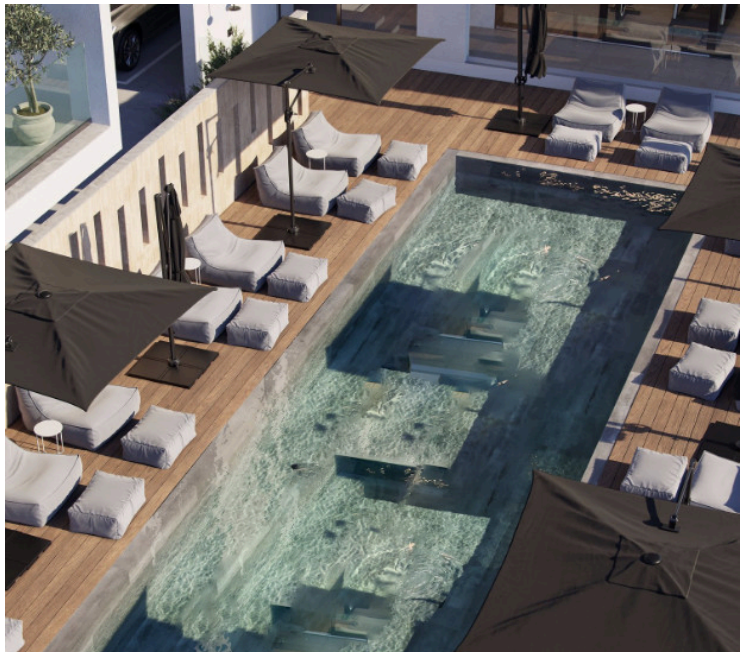
#28496

Two Bedroom Apartment in Aradippou, Larnaca

📍 Aradippou, Larnaca

€280,000 +VAT





Overview

Specifications

Bedrooms

 2


Bathrooms

 2

Covered

 84 m²

Type	Apartment
Toilets	3
Covered veranda	25 m²
Roof garden	63 m²

Status	Off plan
Year of construction	2027
Furnished	Unfurnished
Energy efficiency rating	 A

Description

Two bedroom apartment located in Aradippou, Larnaca. Next to stores, shops, pharmacies, and schools, and near supermarkets, Metropolis Mall, 10 minutes' drive to the beaches of Finikoudes and Makenzi, and the airport, with easy access to the highway.

The apartment will consist of an open-plan kitchen/living room/dining area, two bedrooms (master with en-suite facilities), a family bathroom, and a covered veranda. And a roof garden with a toilet and outdoor kitchen.

Moreover, there will be a storage room and a covered parking space on the ground floor.

Complex Facilities:

- Secure entry
- Common swimming pool
- Fully equipped gym
- BBQ area
- Playground
- Sauna
- Changing room

*The properties can be offered fully furnished or include electrical appliances at an additional cost.

Estimated Completion: Q4 2027



Floor plans

FLOOR PLANS

GROUND FLOOR



BLOCK A - THIRD FLOOR



Apartment 301

87m² covered living area
26m² veranda area
51m² roof garden
4m² storage room
2 bedrooms
2 bathrooms (1 en-suite)
1 parking

Apartment 302

57.5m² covered living area
19m² veranda area
52m² roof garden
3m² storage room
1 bedroom
1 bathroom
1 parking

Apartment 303

83.5m² covered living area
25m² veranda area
63m² roof garden
3m² storage room
2 bedrooms
2 bathrooms (1 en-suite)
1 parking

Apartment 304

88m² covered living area
46.5m² veranda area
63m² roof garden
3m² storage room
2 bedrooms
2 bathrooms (1 en-suite)
1 parking



Additional information

Facilities

Aircondition, Split system

Gated complex

Landscaped garden

Pool, Communal

Childrens playground

Gym

Outdoor shower

Sauna

Clubhouse

Heating, Split system

Parking, Covered

Storage

Features

Bright

Easy access to highway

En suite shower

Floor-to-ceiling windows

Luxury specifications

Municipal water/sewage

Next to green area

Quiet area

Combined kitchen and dining area

Easy access to main roads

Energy efficient doors/windows

Garden

Modern design

Near amenities

Panoramic view

Veranda

Double glazing

En suite bathroom

Fitted wardrobes

High ceilings

Mountain view

Near bus route

Pipe-in-pipe plumbing system

Walk-in closet

Contact us



Yehor Chrysostomou

📞 (+357) 22525269

✉️ yehorborodin@gmail.com

